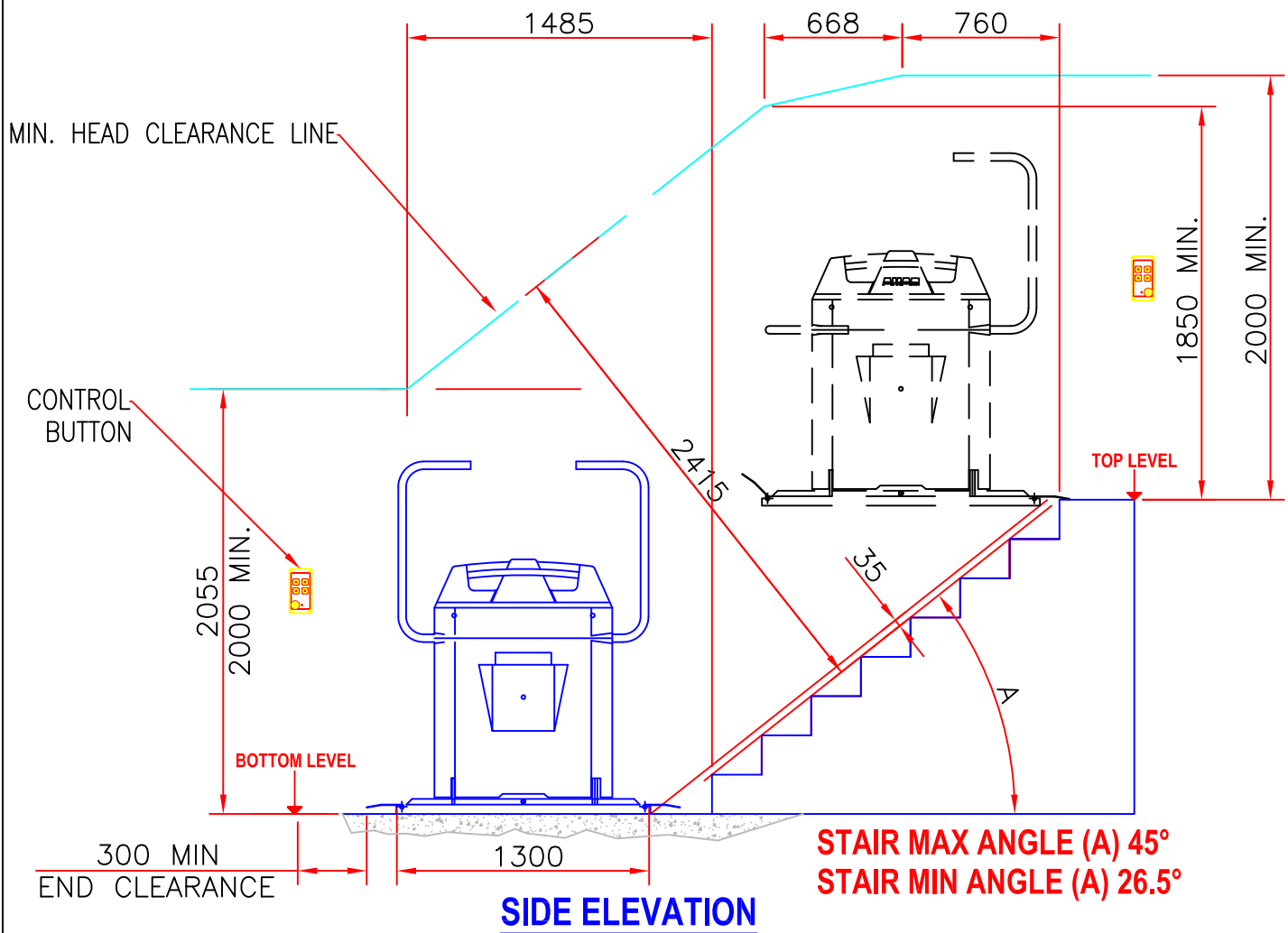
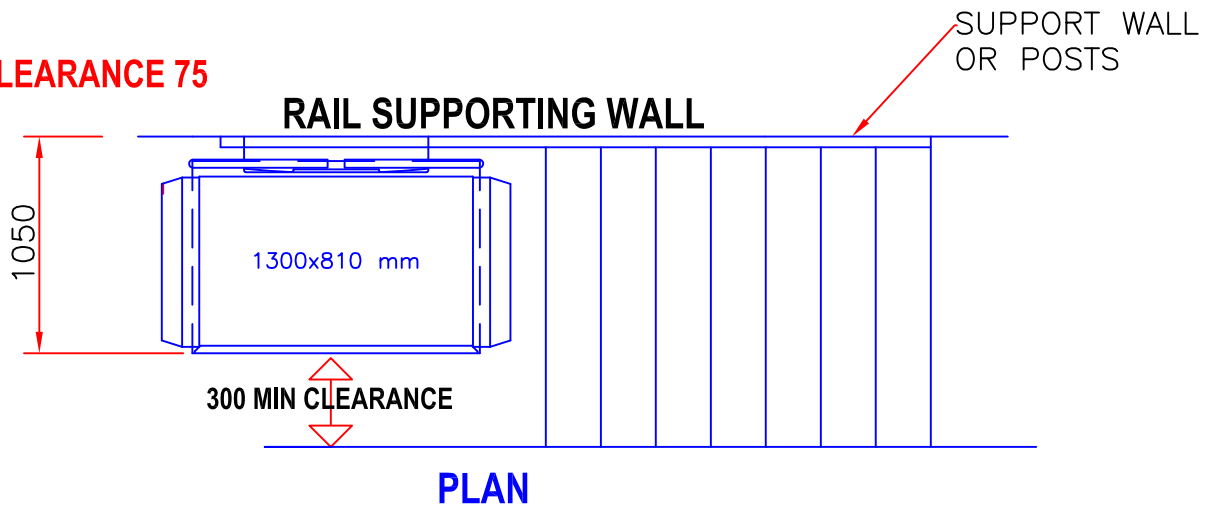


# C7 STRAIGHT STAIR LIFT



**MIN. HAND CLEARANCE 75**



**MIN. TOTAL STAIR WIDTH REQUIRED**  
**1350 FROM SUPPORT WALL OR**  
**1430 FROM BACK OF SUPPORT POSTS**

PLATFORM SIZE	1300 X 810
LOAD / DUTY	225 KG
COMPLIANCE	ASA 1735 PART 7
LIFT TYPE	STAIRISER

**RAISE**  
**Platform Lift Company**

Unit 1, 28-34 Roseberry Street  
Balgowlah NSW 2093  
t: 02 9932 3600  
f: 02 8580 5048  
e: [raise@raiselift.com.au](mailto:raise@raiselift.com.au)  
w: [www.raiseliftgroup.com.au](http://www.raiseliftgroup.com.au)